

A

B

C

D

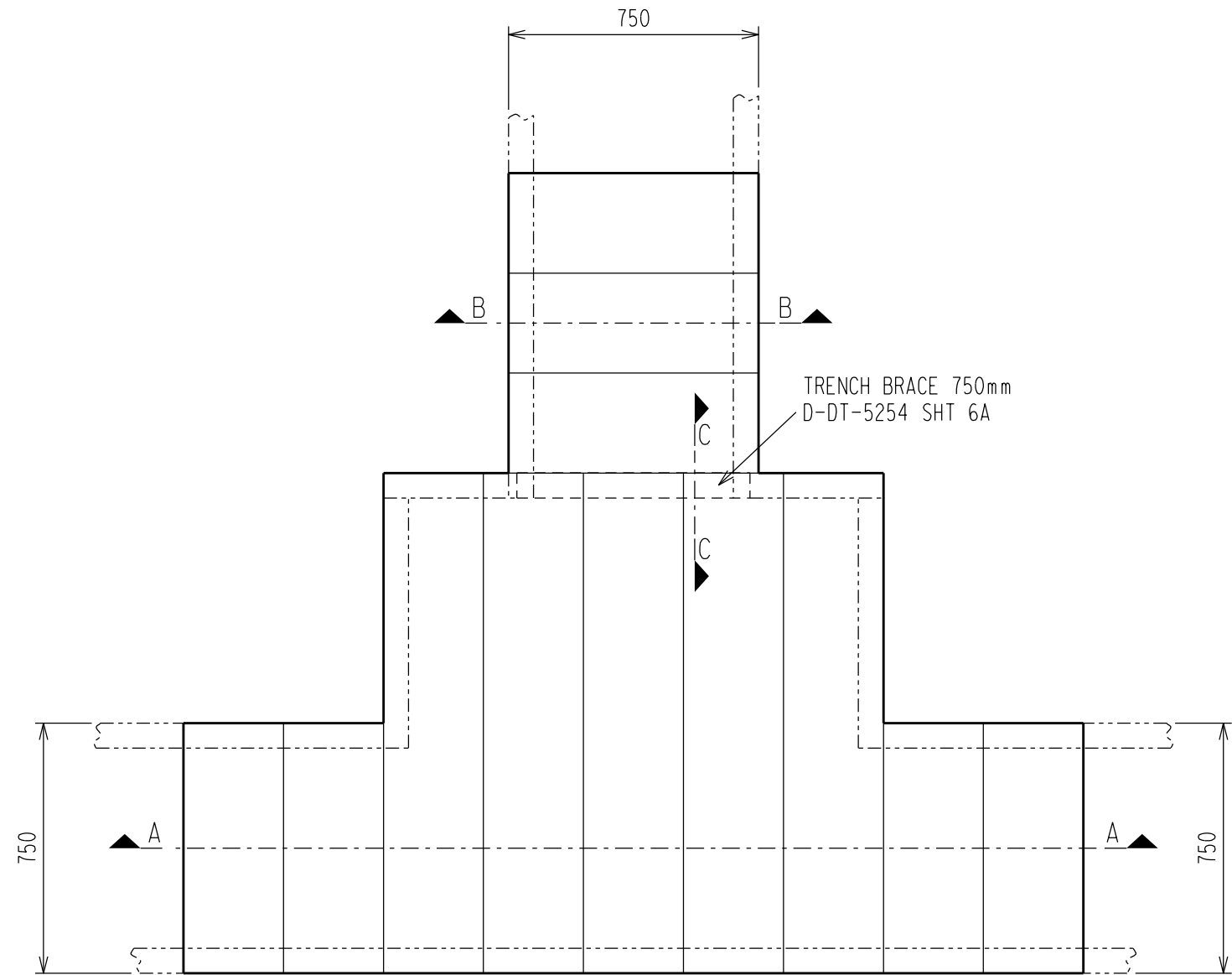
E

F

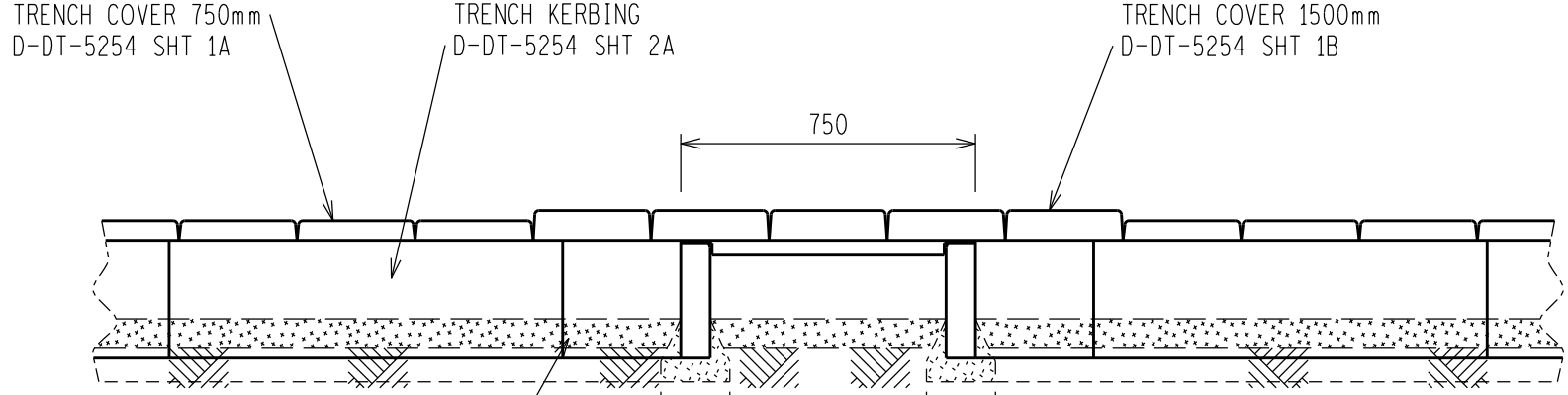
G

H

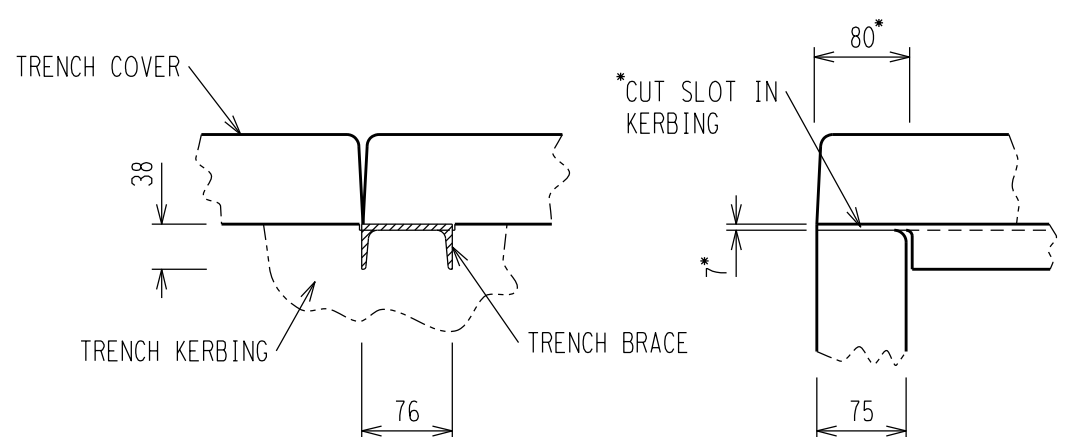
121110987654321



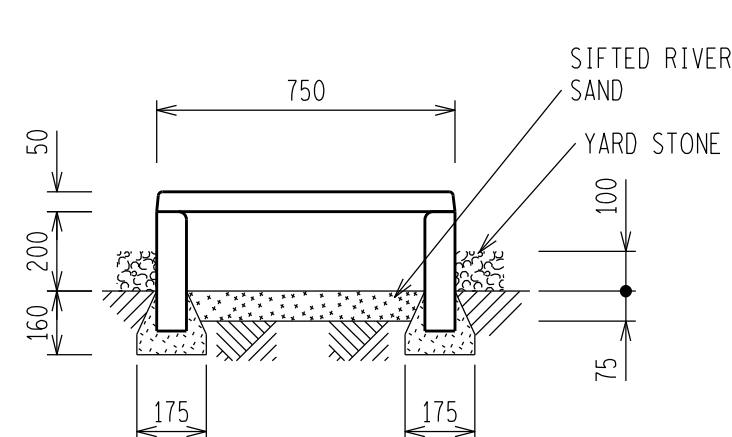
PLAN VIEW



SECTION A-A



SECTION C-C  
DETAIL OF CUT-OUT IN KERBING  
FOR KERBING BRACE  
(NTS)



SECTION B-B

NOTES:

- 1 FOR 750mm TRENCH COVER SEE DRAWING D-DT-5254 SHT 1A.
- 2 FOR 1500mm TRENCH COVER SEE DRAWING D-DT-5254 SHT 1B.
- 3 FOR TRENCH KERBING SEE DRAWING D-DT-5254 SHT 2A.
- 4 FOR 750mm TRENCH BRACE SEE DRAWING D-DT-5254 SHT 6A.
- 5 TRENCH KERBING TO BE PLACED ON CONCRETE FOOTING AS PER DETAIL.
- 6 TRENCH KERBING TO BE INSTALLED WITH ROUNDED EDGE TO INSIDE OF TRENCH TO PREVENT CABLE DAMAGE.
- 7 TRENCHES MUST NOT BE USED AS WALKWAYS.

D-DT-5254	SHEET 50	TRENCH 750 - CABLE TRENCH RAMP
D-DT-5254	SHEET 5N	TRENCH 750 - 'X' TO 750 - STRAIGHT 1500
D-DT-5254	SHEET 5M	TRENCH 1500 - 'X' TYPE A TO 1500
D-DT-5254	SHEET 5L	TRENCH 750 - 'X' TYPE B TO 750
D-DT-5254	SHEET 5K	TRENCH 750 - 'X' TYPE A TO 750
D-DT-5254	SHEET 5J	TRENCH 1500 - 'T' TO 1500
D-DT-5254	SHEET 5I	TRENCH 750 - 'T' TO 1500
D-DT-5254	SHEET 5G	TRENCH 750 - 'T' TYPE A TO 750
D-DT-5254	SHEET 5F	TRENCH 1500 - 90 DEG TYPE A BEND
D-DT-5254	SHEET 5E	TRENCH 750 - 90 DEG TYPE B BEND
D-DT-5254	SHEET 5D	TRENCH 750 - 90 DEG TYPE A BEND
D-DT-5254	SHEET 5C	TRENCH 750 - STRAIGHT TO 1500
D-DT-5254	SHEET 5B	TRENCH 1500 - STRAIGHT
D-DT-5254	SHEET 5A	TRENCH 750 - STRAIGHT
DRG NO.	SHEET NO.	REFERENCE DRAWINGS:

THIS DRAWING IS THE NEW OFFICIAL REVISION AND IT SUPERSEDES ALL OTHER PUBLISHED DRAWINGS						
0	FIRST ISSUE				/ /	
REV	REVISION DESCRIPTION	BY	CHKD	AUTH	DATE	PROJECT NO.
Eskom		SUBSTATION				
AUTH: N WEBBER		TRENCH 750mm WIDE - T TYPE B TO 750mm WIDE				
DATE: 13/08/2014		STRAIGHT INSTALLATION AND				
CHKD: B HLOMENDLINI		SECTIONS				
DATE: 06/08/2014		D-DT-5254		SET	SHEET	REVISION
SCALE 1:20					5H	0
THIS DRAWING IS THE PROPERTY OF ESKOM						
DATE: 15/04/2014						

121110987654321A2L